



# 2020

**began with a wave of excitement at North Cascades Institute.** We were celebrating 30 years of Mountain School, our iconic residential environmental education program for thousands of 5th graders in our region. At the Mt. Baker Ski Area, we were engaging middle school students to learn about snow science, watersheds and climate change. We hosted wilderness medicine training at the Environmental Learning Center, planned backcountry Youth Leadership Adventures trips and created a robust slate of classes and excursions for adults and families. We were staffed up and ready to act on our belief that shared experiences in nature strengthen our communities.

When the coronavirus pandemic hit, making gathering in person and proceeding with our normal programs impossible, we were stopped in our tracks. The Learning Center and Sedro-Woolley office were shut down and staff abruptly sent home to work. Like all of you, we were shocked, dismayed and scared. But resiliency and creativity are in our DNA, so we adapted to face these new challenges head-on.

*How could we work toward our mission of inspiring environmental stewardship through transformative learning experiences in nature in this new world? How could we support our communities with schools closed and people stuck at home? How could we help families connect with nature in their yards and neighborhood parks? How could we keep our staff employed and engaged?*

***We rolled up our sleeves and got to work ▶***

**PARTNERING**  
*in the Whatcom Coalition for Environmental Education to provide in-person academic support and outdoor learning for local students*



**ENGAGING**  
*thousands of park visitors at outdoor pop-up shops and improving our online store (whose sales help fund our school and youth programs)*



**OFFERING**  
*a hybrid model of Youth Leadership Adventures for local teens and creating a podcast about student perspectives on climate change*



**DEVELOPING**  
*new educational video series that will educate people worldwide for years to come about the North Cascades ecosystem and human presence*



**FACILITATING**  
*online learning opportunities on topics such as birds, volcanoes and fire ecology, and other virtual ways for people to engage with nature wherever they live*

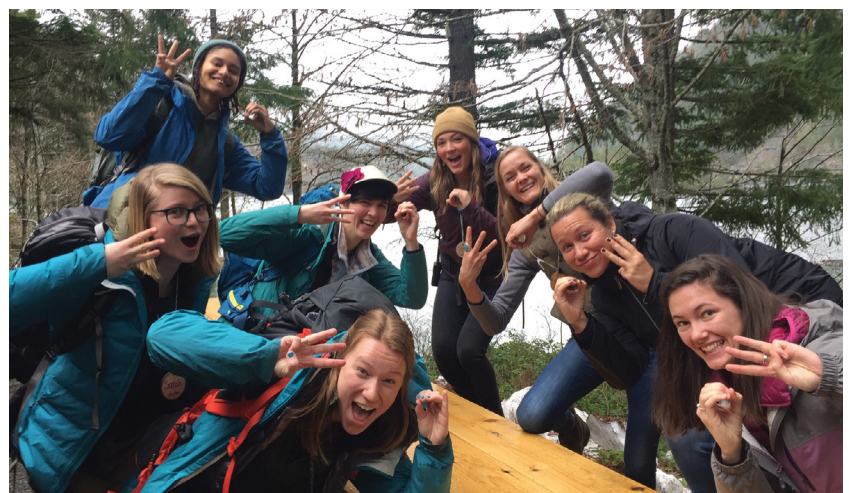
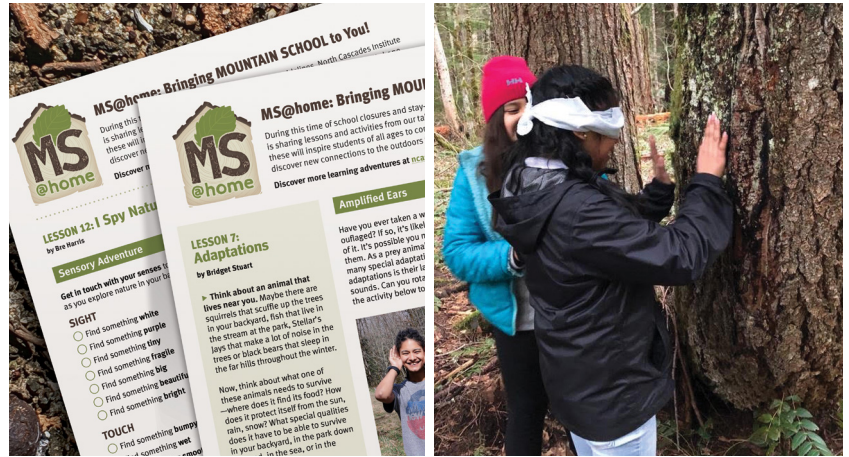


# 2020 PROGRAM IMPACTS

**What we were able to accomplish in 2020**—in unpredictable and ever-changing circumstances—embodies the entrepreneurial energy that created North Cascades Institute in 1986. We didn't surrender to the fear of the pandemic. Instead, we focused on our mission and values. We listened to our communities' needs and adapted our programs to meet new challenges. We took risks and learned from our failures and our successes. And we found the courage to move forward thanks to resiliency and creativity from our staff, our board's leadership and our generous donors and funders. Here are a few highlights from a challenging year:

## Mountain School

► Mountain School is our 30-year-old residential education program in the heart of North Cascades National Park. Only 13% of area 5th graders came to the Environmental Learning Center before the pandemic struck and schools closed. Our instructors turned to several different initiatives, including new “Mountain School at Home” content, and further work on the Curriculum Redesign.



Instructors celebrate the first day of our 30th year of Mountain School.

The new curriculum is more student-centered and focuses on Next Generation Science Standards, climate literacy and indigenous presence in this place. Through this redesign, we intend to increase the relevancy of the content by centering identity-affirming, social-emotional learning, ushering in a new era of teaching for social justice.

Our instructors created more than 20 new educational activities and videos and shared them online with teachers, parents and students, including topics like Owl Adaptations, Watersheds, Glaciers, Nature Art and "Walking with Wonder."

“Mountain School at Home is just plain AWESOME! Thank you so much to all of your staff for making this great resource for us and our kids!”

— Harriet Rowley Elementary teacher





## Youth Leadership Adventures

► Youth Leadership Adventures inspires a lifelong conservation ethic in the next generation of leaders. In 2020, Institute staff came up with a modified version of YLA, recruiting small cohorts of local students and providing them with a combination of self-guided, at-home activities, social media prompts and a culminating in-person adventure day of sea kayaking. They also created a podcast that gave student participants an opportunity to reflect on their feelings surrounding climate change, a challenge that in many ways defines this generation of youth.

32

STUDENTS IN  
4 SESSIONS

256

LEARNER  
DAYS

35%

ALUMNI OF OTHER  
INSTITUTE PROGRAMS

“If you hope for a better future, you have to imagine it, then start taking steps to do it.”

—2020 YLA student

## Mt. Baker Snow School

► Mt. Baker Snow School brings Whatcom and Skagit County middle school students to the headwaters of their home watersheds to learn how water connects us all. Our goal is to support local teachers with a relevant, place-based environmental science curriculum. In spite of snow day cancellations and ending the season early due to the pandemic, we served 416 students from 11 different schools (73% of students we anticipated for 2020), including Concrete School District students for the first time.

“Snow School allows me to bring my students outside to a landscape which many of them would never experience otherwise. For some students, it is their first significant ‘wild’ outdoor experience. This opportunity has potential for profoundly influencing a student’s education and life. It could be the key that opens their eyes to their connection with the natural world, even if only in a small way.”

—Mount Baker Junior High science teacher



416

YOUTH SERVED  
FROM 11 SCHOOLS

45%

LOW INCOME  
STUDENTS

69%

RURAL UNDER-  
SERVED SCHOOLS



## Whatcom Coalition for Environmental Education's Connections

► A new in-person outdoor program, Connections gave young people furthest from opportunity in Blaine, Mount Baker, and Bellingham school districts a chance to gather with their peers and learn about the natural world from some of the region's leading environmental educators. This program was designed to augment virtual learning and provide students with enriching time outdoors. Students were selected by their teachers as those who had qualified for academic support in the previous school year, who were eligible for the federal Free or Reduced Lunch program, had limited access to the outdoors at home, or who had low attendance during remote schooling in the Spring.



**Excerpt from *Some kids have been learning outdoors for months in Whatcom County*, NPR feature story published December 18, 2020:**

“Mount Baker Superintendent Mary Sewright said teaming up with outdoor-learning nonprofits like North Cascades Institute made sense. It was a chance to work out the coronavirus safety protocols and pave the way for the district to reopen on a hybrid schedule for elementary kids last month. With that schedule, all elementary students come two mornings a week. But kids in the outdoor education program get an extra day at school.



PARKER MILES BLOHM / KNKX

‘It was just a great opportunity to get our kids here in person and prove that we can do it to make people more confident about bringing kids in in-person, because we know especially with elementary kids, that’s really important, and the benefits really outweigh the risks,’ she said.”

► Find the whole article at [www.knkx.org/post/some-kids-have-been-learning-outdoors-months-whatcom-county-not-seattle](http://www.knkx.org/post/some-kids-have-been-learning-outdoors-months-whatcom-county-not-seattle)

172

SERVED  
IN PERSON

13

COLLABORATING  
SCHOOL DISTRICTS,  
ORGANIZATIONS,  
AGENCIES AND  
LOCAL FUNDERS

2,151

LEARNER  
DAYS

“Way to go today! I took a poll yesterday asking my class how everyone was coping—half of the class said they'd been better. The poll's results were much more positive today and I know in part it's because they're back together again to learn (at Connections). I could see it through the camera that they looked much more engaged. Thank you for pulling this off. —6th grade teacher



## REFLECTIONS FROM CONNECTIONS STUDENTS

### My favorite part of the Connections program was ...

- *I was able to be with friends and I made new friends*
- *how the instructors made it fun to learn and were able to make the most boring topic into a fun adventure*
- *how kind people were*
- *field trips and fun games*
- *going outside*
- *seeing animals*

### The hardest part of the pandemic for me has been ...

- *the inability to socialize and learn*
- *my family getting coronavirus*
- *finding stuff to do*
- *not being able to see my friends*
- *not playing sports*

### My favorite thing I learned about in Connections was ...

- *macroinvertebrates*
- *fish habitat*
- *symbiotic relationships*
- *owl pellets and dissecting them*
- *invasive plants*
- *lichen is different from moss*
- *clay volcanoes*
- *to be careful with nature*

### One thing that helps me learn is ...

- *being able to move*
- *hands-on experience*
- *hands-on learning*
- *being around other people*
- *our listening song ("eyes watching, ears listening, voice quiet, body calm")*

## At the Environmental Learning Center

► The pandemic closed the Environmental Learning Center to in-person programs two weeks into Spring Mountain School in March 2020. Thousands of hours spent planning, budgeting and training were thrown out the window, and we were forced to cancel Mountain School, Forest School, Base Camp, Family Getaways, Learning Center classes, and Conferences and Retreats through the summer—our busiest time of the year.

With campus closed and the help of a PPP loan, our kitchen and facility staff dove into maintenance work, including deep cleaning in buildings, interior and exterior painting of the Dining Hall, staining of big beams and the Lily Shelter, Maple House and Library exterior painting, and other backlogged maintenance projects. Other staff worked on foodshed and garden activities, creating Mountain School at Home lessons, more work on the Mountain School curriculum update, Spanish translations of educational materials, Learning Center accessibility projects and more!



The kitchen staff preserved foods that would otherwise perish when the Learning Center closed

The closure was an opportune time for big projects like refinishing the dining hall floors



Food services were adapted to safely provide take-out meals to campus visitors

Interior and exterior spaces around campus received fresh coats of paint

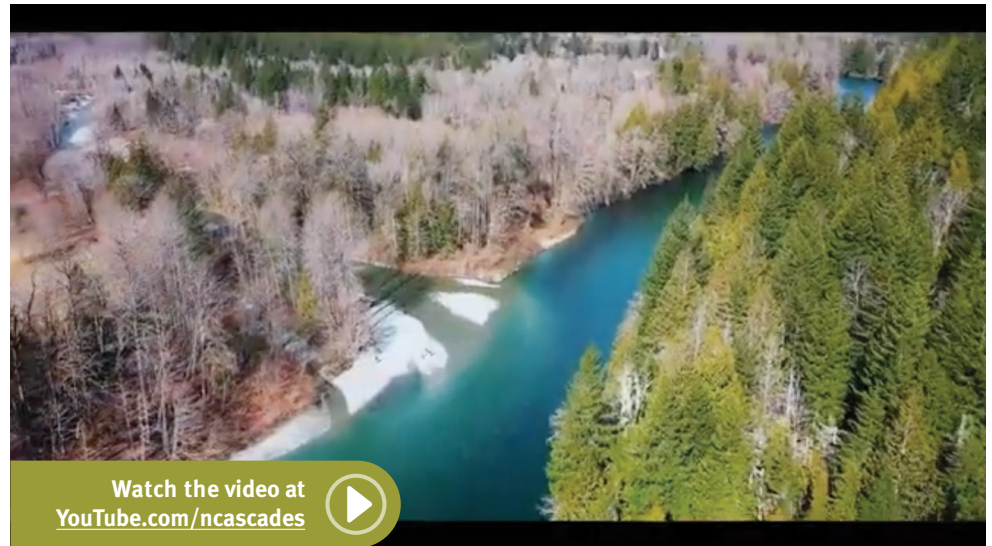


Eventually, we were able to adapt Learning Center safety protocols, (such as changing our buffet and Dining Hall set up to take-out meals) so we could re-open on a limited basis to house Seattle City Light researchers, host wilderness medical trainings and offer small-group Base Camp Learning & Lodging in the fall.



## Diobsud Conservation Easement

► North Cascades Institute placed a portion of our 9-acre property near Marblemount—the ecologically-rich riparian zone where Diobsud Creek meets the Skagit River—into a conservation easement held by the Skagit Land Trust. We purchased the property in 2014 to provide housing for staff. The Diobsud Creek watershed is important for wildlife including salmon, wintering bald eagles and the return of wolves to Western Washington. The land along the creek and river shoreline will remain undeveloped forever.



Watch the video at  
[YouTube.com/ncascades](https://www.youtube.com/ncascades)



**1,150** FEET OF CREEK AND  
RIVER SHORELINE  
PROTECTED FOREVER

COMPLETED  
**DEC 2020**

“When the Skagit Land Trust does a conservation easement such as the one at the Confluence property, that partnership is forever. North Cascades Institute really got how this is a commitment now and for generations to come. So much so the Institute created a \$25,000 fund to support future stewardship work on this easement. We are so lucky here in Skagit County to have partners such as North Cascades Institute that have a far-reaching vision for caring for these lands. — Michael Kirshenbaum, Skagit Land Trust Conservation Director

## Coronavirus Pandemic Impacts



► Due to the COVID-19 pandemic, we cancelled most in-person programs at the North Cascades Environmental Learning Center in order to protect the health and safety of our staff and participants. This resulted in loss of anticipated revenue and the need for extensive staff furloughs and reductions in hours. While the pandemic had a dramatic impact on our budget, we ended the year much stronger than we initially expected due to careful management of our expenses, receiving a grant from the Small Business Administration forgiving part of the Institute’s Payroll Protection Program loan, and the incredible generosity of our individual and foundation donors.

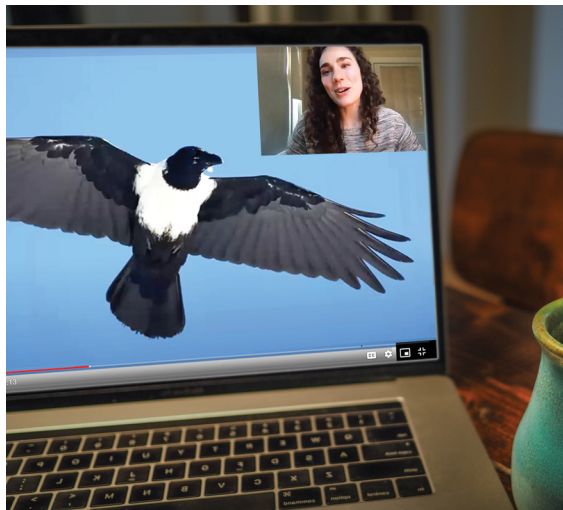
### AT A GLANCE

- In 2020, the Institute earned \$1.2 million less in tuition and contracts than budgeted, although much of that loss was offset by the reduction in expenses, including staffing.
- All staff experienced furloughs and/or reduced hours for a significant portion of the year.
- The Institute was also able to recoup some losses through a \$326,000 Small Business Administration grant that forgave part of NCI’s Payroll Protection Program loan.
- We are particularly grateful that many foundations changed “program” grants into “general operating” grants so we had maximum flexibility to respond to the pandemic. Many of our individual donors gave above and beyond to help us as well.



## Online Learning

► With in-person programs cancelled, we quickly learned new technology in order to host eight virtual educational programs, including The People of the Sacred River, Watercolor Mountains in Monochrome, Living with Volcanoes and The Ethical Photographer. We also partnered with Village Books for online author readings.



We also created 30 new videos to facilitate remote learning, reaching thousands of people from around the country with presentations on phenology, cooking classes, poetry readings, the Upper Skagit Hydropower Project and local cultural history. Watch at [YouTube.com/ncascades](https://www.youtube.com/ncascades).



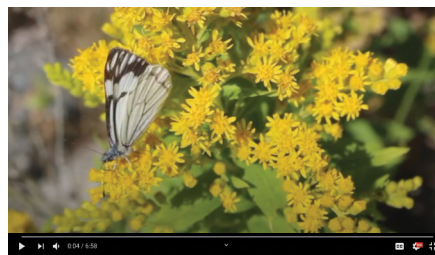
Mountain School at Home videos



Poetry in the Rain series



Mystery Skulls with Alexa series



Phenology with Zoe series



Foodshed Explorations with Chef Justin



A Cultural History of the Upper Skagit

“The North Cascade Institute online programs have really been a wonderful way for us to stay connected and get some outdoor inspiration!” —Seattle family

## Strategic Plan

► Our Board of Directors approved a new Strategic Plan at the end of 2019. While COVID-19 impacted the way we conduct our programs, we still worked toward these broad goals:

### LIFE-LONG LEARNING

– Facilitate ongoing environmental stewardship through effective, high-quality, place-based programs and digital outreach.

### KINSHIP

– Cultivate an Institute community of belonging that is welcoming and accessible to ensure the Institute is relevant in a changing world.

### CONSERVATION IN PRACTICE

– Achieve Institute climate neutrality by 2030 and use the journey as an opportunity to inspire action in ourselves and others.

### EXEMPLARY WORKFORCE

– Establish best practices for sustainability of Institute staffing and operations to ensure our ability to respond to opportunities and challenges.

### FISCAL SUSTAINABILITY

– Maintain long-term financial sustainability to support the Institute’s mission and strategic goals.



# 2020 PARTNERS AND SUPPORTERS

**Our sincere thanks to over 800 individuals, families, and organizations** whose contributions helped make North Cascades Institute programs possible. You energized and inspired us to remain nimble, creative and resilient! Your gifts and grants created virtual educational opportunities, expanded our work in local schools and communities, and facilitated robust programs for all ages in the North Cascades. Because of you, we had the flexibility to respond to the changing needs of our community. Thank you!

## A ▶

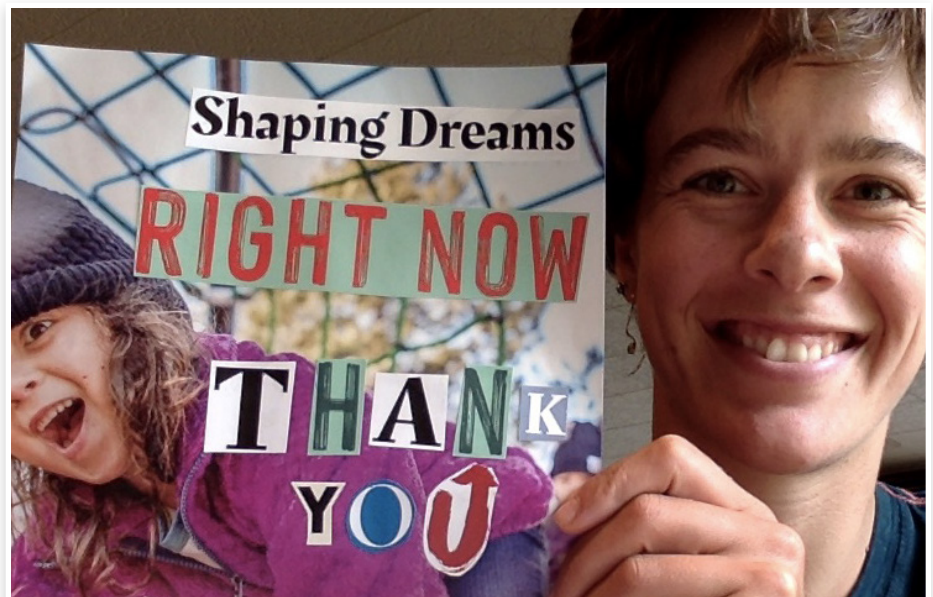
Bob and Molly Abrams  
Jenny Abrams and April McCoy  
Alysa Adams  
Adobe Systems Incorporated  
Jeremiah Alexander  
Kathryn Alexandra  
Eric Allan  
Luther Allen  
Deborah and Benjamin Alterman  
Ofer Alves and Kristen Gahnberg  
Amazon  
AmazonSmile Foundation  
American Alpine Institute  
American International Group  
Gemma Amos  
Eileen Andersen  
Jamie and Julian Andersen  
Kari Anderson  
Kari Anderson and Jory Oppenheimer  
Leeta Anderson  
Mary and Richard Anderson  
Terry Anderson  
Jennifer and Pete Apple  
Harriet and Alfred Arkley  
Wendy Arness  
Jim and Maria Arthur  
Tony Ashe  
Anne Aumell

## B ▶

Sharon Babcock  
Rich Baker and Becky Anderson  
Sharon Baker and Richard Droker  
Paul Balle  
Rob Barefoot  
Carrie Barrios  
Diane and Mike Bates  
Kristi Bathum  
Douglas Baugh and Kelly Loughlin

Shawn Baz  
Lisa Bean King and Justin King  
Beardsley Family Foundation  
Jim and Nell Beaulaurier  
Amelia Becke  
Elizabeth and Richard Bedient  
Barbara and William Beer  
David and Victoria Benoliel  
Diane and Paul Berg

Simon and Christina Blue  
Nancy Bluestein-Johnson  
Kim Bockenkamp  
Stephanie Bode  
Boeing Gift Matching Program  
Burt Boltuch  
Laurie Bomstad Heck and Ken Heck  
Kayla Bonn-Andres and Joseph Bonn  
Bill Booth



Paula and Devin Berg  
Elizabeth Berggren  
Jeffrey Berghammer  
Lynn and Malcolm Best  
Ann Bieri  
Bill and Melinda Gates Foundation  
Lenka Bindzar  
Cindy Bjorklund and Jeremy Baker  
B. Jean Black and Ron Rosenbloom  
Buff and Terah Black  
Elizabeth Black and Benham Pruett  
Nancy Blakey  
Dana and Eric Blazevic

Barbara Bora Bora  
Abigail Borchert  
Christopher Borkowski  
Reya and Maketa Born  
Bruce Bowden  
William and Susan Boyle  
Kate Bradley  
Cynthia Bradshaw  
Kevin Brailey  
Alexa Brandt  
Jane Brandt  
Martha Bray and John Day  
Barbara Brennan



Jeff and Debbie Brennan  
Lisa Brenskelle  
Pat and Jim Britian  
Ann Brodie-Knope  
Debra and Bob Brodie  
Jodi Broughton  
Amy Brown and Beth Auza  
Amy Brown and Eric Mickelson  
Patricia Brown  
Peter Brown  
Mark Browning  
Timothy and Beverly Browning  
Mary Brucker  
Jeni Brue  
Mikki Burkholder  
The Burning Foundation  
Dawn Bustanoby  
Donaleanne Buttz  
Patrick and Joan Byrne



Elissa and Jason Cahill  
Cambia Health Foundation  
Clark and Erin Campbell  
David and Debbie Campbell  
Glen and Anita Campbell  
Mary Campbell and Steve Purcer  
Tom and Sonya Campion  
John Caner Jr  
Frazier Caner  
John and Phoebe Caner  
Zimmie Caner and Tom Edwards  
Mary Carlson  
BJ Carol  
Curt and Dawn Carpenter  
Juniper and Paul Carpenter  
Frances Carr  
Cindy Carroll  
Katie Carson and Chuck Groesbeck  
Catherine Carter  
Jim and Marja Cartwright  
Tina Castillo  
Kirsti Charlton  
Christel Cherry  
David Chayette and Cynthia Todd  
Frank and Michelle Chiachiere  
Ann Childs and Steve Thornton  
Ki Chon

SuJ'n Chon and Han So  
Richard Chrappa  
Barbara Christensen  
Ellen Christilaw  
The Christoffersen Family Fund of  
Seattle Foundation  
Chuckanut Health Foundation  
City of Seattle  
Norene Clark  
Drs. Sandra and Sterling Clarren  
April Claxton  
Maureen Cleveland  
Clif Bar Family Foundation  
Harvey and Naomi Cohen  
Jonathan and Cindy Cohen  
Tiffany and Matthew Coke  
Community Food Co-op  
Susan Conn  
Sue Connell  
Beverly Conner  
Mary Connors  
Ben and Elizabeth Cooksey  
Bonnie Cooper  
Dianne Cooper  
The Corbin Environmental Fund  
Marc Cordova  
Ross and Barbara Craigie  
Susan Crampton  
Heather and Carl Craven  
Mechi Cremer  
Elizabeth Cromwell  
Dorothy Culjat  
Tracey Cummings  
Barb Cummins



Mark and Elaine Dale  
Karen Dalenius  
Stephanie Daniels  
Lauren and David Danner  
Darby Foundation  
Ginny Darvill  
Corrine and Scott Davis  
Jackie Davison and Mark Lawrence  
Judith de Barros  
Gretchen DeDecker  
Carina del Rosario and David Roesel  
Kris deLancey

## MAJOR PARTNERS



Please let us know if you see any errors or omissions in this list:  
[give@ncascades.org](mailto:give@ncascades.org). Thank you for your support!



John and Wendy DePaolis  
Kim DesJardins  
Dan Deuble  
Pete and Alice Dewell  
Deborah DeWolfe and Kate Stewart  
Joan Dinkelspiel  
Discuren Foundation  
Shirley Dockendorf  
Jan Doescher  
Lani Donohoe and Tom Griffin  
Nancy Donohue  
Sue Dougherty  
Douglas and Maria Bayer Foundation  
Dudley Foundation  
DV and Ida J McEachern Charitable  
Trust

## E ▶

Adrienne Eaton  
Richard Eckert  
Anna Edwards  
Ehrlich-Donnan Foundation  
H Prow and Mitra Ehsan  
Cat Eiche  
Barbara Eisenberg  
Mark and Tracey Eisenberg  
The Eleanor and Henry Jansen  
Foundation  
Andrea Ellinger  
Peter Ellis  
Catherine Endicott  
Charles Endicott  
Deborah Engebretson  
Gail Engler  
Sarah Eskenazi  
Dale and Sharon Evans  
Rich Evans  
Shawn Evans

## F ▶

Esther Faber  
The Fairchild Giving Fund  
Laurie and William Farmer  
Robert Fealy  
Philip Fenner and Susan Skillman  
Corwin Fergus  
Fidalgo Island Rotary  
Brian and Shannon Finch  
Rebecca Finkel and Eli Pristoop  
Barbara Fisher  
Laura and Chris Fisher

Georgene Fitzgerald  
Brian Flaherty  
Tom Fleischner and Edie Dillon  
Krista Fleming  
Florence and Orville Shortlidge  
Charitable Trust  
Mike and Shannon Flory  
Kelly Flynn and Garth von Ahnen  
Pam, Starck and Nicola Follis  
Jonathan Brown and Brynnen Ford  
Juby and Tom Fouts  
Howard Fox and Theresa Trebon  
Kathryn Fox, Max Green and Taylor  
Hudson  
Susanne Frantz  
Fred Meyer Corporation  
Paddy Freeman and Susan Golub  
Evelyn Friesen  
Stephanie Friesen  
Dr. Alan and Lisbeth Fritzberg  
Lauren Fritzen  
Susan and Albert Fuchs

General Mills Foundation  
Will George  
May and John Gerstle  
Jeff and Janet Giesen  
Neil and Leslie Gilham  
Kristofer and Kristen Gilje  
Bob and Jean Gillespie  
Ryan and Kayli Gimarc  
Gitchi Adventure Goods  
Donna and Paul Glasoe  
Matthew and Ariel Gliboff  
Jean Leib and Jeanne Glick  
Merkys Gomez and Michael Bundesmann  
Kathleen and Richard Goodrich  
Sally Goodwin  
Google Seattle  
Allen and Carol Gown  
Robyn Grad  
Dianne Graham and Marvin Yamaguchi  
Gillian and Mark Grambo  
Anne Green  
Alan Greenbaum and Laura Thorne



## G ▶

Nancy and George Gale  
Elizabeth Gall  
Mike and Frances Gallo  
Susan Gallotte and Ronald Ebbers  
Alden Garrett and Charlie Erickson  
Crystal Gartner  
Ed and Carolyn Gastellum  
Vincent Gates and Susan Corcoran  
Neil and Sonjia Gavin  
Gear Aid Inc.  
Tom Gedosch

Cathy Grinstead and Jim Nelson  
Laura Grow and Shawn MacDougall  
Heather Grube and Corey Breuer  
Guemes Island Environmental Trust  
John and Gerri Gunn

## H-I ▶

Michael Haberman  
Janis Hadley  
James Hadlock and Sharon Brown  
David and Catherine Hall  
Nathan and Katie Hambley



Harmony Hames  
James Hansen  
Joanie Hansen  
Max Hanson  
Jeff Hardesty and Susan Jacobson  
Molly Harrigan  
Harrington-Schiff Foundation  
Kara Hartman  
Molly Hashimoto  
Melvin and Katherine Haug  
Susan Hawthorne  
Maureen Hayden  
Hamilton Hayes and Gloria Harrison  
Kara and Mike Heck  
Lizette Hedberg  
Marie and Dale Hedden  
Carol Hedlin and Margot Knuth  
Carla Helm  
Christy and Randy Henderson  
Cheri Hendricks  
Henry M. Jackson Foundation  
Dr. Harry and Mrs. Elizabeth Herdman  
Zachary Hewell and Clarissa Allen  
Pat and Terry Higman  
Dave Hill and Gabriela Olmos-Hill  
Tacy Hindle  
Ingrid and Charles Hinton  
Eric Hirst  
Allegra Hodges  
Karen and Chuck Hoelscher  
Diana Hoffman  
Robert Hoffman  
John Hogan  
Jeanette Hollenbeck  
Steve Hollenhorst  
Jane Ellen Holliday Wilson  
Caitlin Holman  
Lauren Holstein and Dave Gravelle  
Sherry Holtzman and Steve Sinderson  
Horizons Foundation  
John Horner and Jeanine Hart-Horner  
Melanie Horowitz-Coyne  
Megan Hoskinson  
Brice Howard and Amy Fox  
Chuck Howell and Charlene Day  
Dorothy Hudson  
The Hugh and Jane Ferguson  
Foundation  
Holly Hughes

Susan Hunt  
Gerry Hutson  
Intel  
Nicole Irizarry Fernandez



## J-K ▶

Joanne Ja and Harry Ja Wong  
Craig and Ann Jackson  
Sego Jackson and Raven Jirikovic  
Mark Janicke and Mary Lowry  
Anne Marie Jenkins  
Carl Johansen  
Bradley and Erica Johnson  
Elise Johnson and Liz Knowles  
John and Marisol Joynt  
Juniper Foundation  
Manit Singh Kalsi  
Karen Kaushansky  
Gayle Keith-Ashley  
Austin Kellogg and Davor Kostovic  
Mark Kelly and Julie Straight  
Dianne Kelso  
Sunny Kim  
Linden Kimbrough  
The Kinder Fund of the Whatcom  
Community Foundation  
Sara Kiner  
Tobey and Barbara King  
Sarah Kinsel  
Maggie Kinsella and James Hopper  
Deborah Kirsner  
Eugene and Barbara Kiver

Kal Klass and Shelly Soble  
Byrna and Bob Klavano  
Cynthia and Bob Klein  
Jesse Kleinman  
Jeanne Kloser  
Daniel Knight  
Gretchen Knipshild  
Kim Knust  
Stephen and Betsy Koepp  
Thomas Kohn and Cheryl McMillan  
Louise Kornreich  
Kim Kosa  
Ken Kraemer and Lou Grogan  
Matt Kraska  
Erik and Jocelyn Krieg  
Ellen Kritzman  
Elizabeth Kuehn  
Christine Kuepfer  
Tina Kurfurst

## L ▶

Calvin Laatsch  
Colleen Lafferty  
Ione Laffey  
Lynn Lahey  
Barry and Dawn Landau  
Mary and Edwin Langbein  
Judy Lantor  
Buffy Lapof  
Sean Large  
Sharon Larson  
Andrea Laughery  
Dan Laursen and Barbara Paul-Mayer  
Law Office of Shara Svendsen, PLLC  
The Lawler McCurdy Giving Fund, a  
Donor Advised Fund of Renaissance  
Charitable Foundation  
Orawan and Robert Layne  
Sally Ledgerwood and Gary Ingram  
Cindy Lee  
Jennifer Lee and Jason Roselander  
Michael Lee  
David and Linda Leisy  
Rick and Tracey Levine  
Mara Lewis  
Pat Lewis  
Lhaq'temish Foundation  
Michele and Robert Liburdy



Brad Liljequist  
Joshua and Briana Lindenbaum  
Patty Lins  
Tad and Darcie Lloyd  
Louise Locke  
Christina Lockmiller  
David Loeb  
Eileen Loerch  
Kristina Logsdon and Voltaire Atienza-  
Wilkinson  
Pawadee and Kamol Lohavanichbutr  
Diane Lookman  
Nancy and Doug Loviska  
Jennifer Low  
Mr. Andrew Luk and Miles Schlosberg

Christian Martin  
Deb and Ted Martin  
Vera Martinovich  
Peter and Linda Marziliano  
Iris Maute-Gibson and Rifka MacDonald  
Nicholas Mayo  
Scott and Frances McAdams  
Carter McBride and Patsy Sellars  
Dave McCallum  
Sanni McCandless and Alex Honnold  
Kris McClain  
Sara McCoy  
McDanel Land Foundation  
Megan McDonald  
Tanya and Russell McDonald

Colleen McShane and David Batchelder  
Richard Meadows and Laura  
Washington  
Kathy Mechling and Jim Gurley  
Martin and Lissa Mehalchin  
Sue Mehler  
Nicola Merrett  
Emma Meu  
Microsoft Matching Gifts Program  
Anne and Jack Middleton  
Judith and Gordon Middleton  
Bob Mierendorf and Helen Kraft  
John Miles and Susan Morgan  
C Lee Miller and George Thornton  
Guy Miller  
Howard and Deborah Miller  
Linda Miller  
Scott Miller  
Stan Miller  
Kate Mills and John Marshall  
Sarah and Adrian Mintz  
Brittany Miracle  
Eleanor Mischaikow  
Anne Mitchell  
Justin and Meredith Mitchell  
Chris Moench and Jennifer Hahn  
Richard Monroe  
Helen Moreland  
Mary Morgan and Tim McNulty  
Stephanie, James and Ashlyn  
Morgareidge  
Mt. Baker Ski Area  
Elise Muffitt  
Norm Mundhenk  
Xiomara Munoz and Brian Kennan  
Heather and Patrick Murphy  
Patricia Murphy  
Edward Murray and Michael Shiosaki  
Miller and Sharon Myers



**M ▶**  
Beau MacGregor and Ryan Castle  
Mac and Linda MacGregor  
Donna and Joseph MacKenzie  
Madeline Pugglesworth Foundation  
Sue and Len Madison  
Susan Madsen  
Christina Maginnis  
Maguire/Maguire, Incorporated  
Mark Malone and Joan DeClaire  
Timothy Manns and Brenda  
Cunningham  
Valerie Marquis

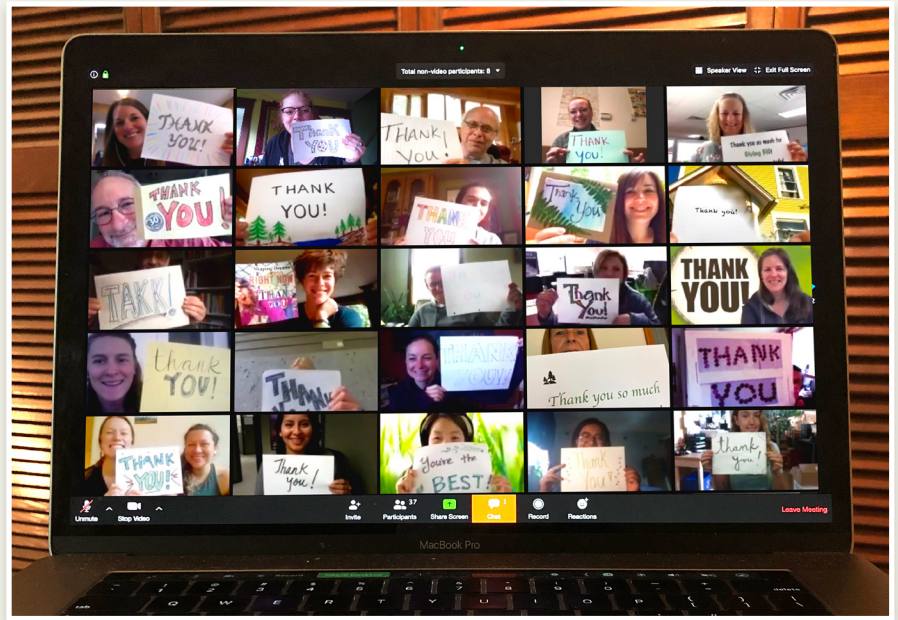
Jenica and Chris McEvoy  
Penny McGinty  
Tryg McInerney  
Bill McJohn  
Nan McKay and Howard Berglund  
Kathleen McKenna  
Connie McLaughlin Bowser and Bill  
Bowser  
John McLaughlin  
Brooke McLean  
Brandi McLeod  
Mary McMahan  
Heather McPherson  
Julie McQuary

**N ▶**  
Juniper and Krishnakant Nammi  
Josh and Pam Narode  
Steve and Sandy Nason  
National Park Foundation  
Danne Neill  
Chris Nelson  
Glenn Nelson and Florangela Davila  
Kim and Matt Nelson

Maren Nelson and Matt Robertson  
 Paul Nelson  
 Maryann Ness  
 Terry Newcomb and Patty Ryan  
 Mathias and Mandy Newell  
 Jess and Chris Newley  
 Mary Nichols  
 Sue and Terry Nightingale  
 Emmett and Danielle Nixon  
 Christopher Norment  
 North Cascades Conservation Council  
 North Drinkware  
 Northwest Avalanche Center  
 Chris Nosko and Erin Rohan  
 Rita Novak

## O-P ▶

Joan O'Connell and Stephen LeCuyer  
 Gary and Julie O'Donald  
 Therese Ogle and John Draper  
 Jordy Oleson  
 Rose Oliver  
 Erik Olson and Brennan and Tara Van  
 Loo  
 Penny Olson and Andrew Bernat  
 OneFamily Foundation  
 Organically Grown Company  
 Janet Ott  
 Patricia Otto  
 Nancy Oyloe  
 PAC Worldwide  
 Linda Park  
 Richard and Kathleen Parker  
 Joy Passanante  
 Steve Paustian  
 Robert Pearson  
 Marla Peele  
 Brian and Debby Peterman  
 Mindy Peters-Virgen  
 Gloria Pfeif  
 Kate Pfeilschiefter  
 The Phyllis & Charles Self Endowment  
 Fund of the Whatcom Community  
 Foundation  
 Alaina Pizzo and Richard Widdle  
 Lorraine Plauth  
 Elizabeth and Paul Poehlman  
 Stephanie and Ken Poelker  
 Brian and Joan Poor  
 Portland General Electric  
 Jennifer Potocnik



## HONORARY/MEMORIAL GIFTS

Margie Allen  
 Adam Bates  
 Patricia Benavidez  
 Paula Berg Family  
 Jim Biggerstaff  
 Mary Lou Block  
 Franklin Bradshaw  
 Walter Brodie and Linda Versage  
 Jodi Broughton  
 Zimmie Caner  
 Judy Chapman  
 SuJ'n Chon  
 Sterling and Sandy Clarren  
 Maureen Cleveland  
 Terry Conner  
 Diablo Dames  
 Polly Dyer  
 Leonard Eisenberg  
 Catherine Endicott  
 Margaret Endicott  
 George Engler  
 Tom Fleischner  
 Bob Friesen  
 Paul Goodrich  
 Kathy Hames  
 Molly Harrigan  
 Herzberg/Wagner Family  
 Michael Hoffner  
 Sheila Holtgrieve  
 Steven E. Hoyt  
 Peter Jackson  
 Anita Karr  
 Elizabeth Kerwin and Jillian Froebe

Calvin Laatsch  
 Harold Leiby  
 Bill Lester  
 Hannah Levine  
 Karan Lins Bakke  
 Dr. Jean Carter McBride  
 John Miles  
 Rotha Miles  
 George W. Miller  
 Margaret and Joe Miller  
 Dee Molenaar  
 Mike Mosbrooker  
 Andrew Murphy  
 Therese Ogle  
 Lorrie Otto  
 EnSue Pung Puaa  
 Patrick Robinett  
 Carlos Ruffino  
 Brian Scheuch Memorial  
 Larry Squire  
 Cara Stoddard  
 Rick Stoddard  
 Joy Tally  
 Frank Tarver  
 Lindsay Anne Walker  
 Robert Weigle  
 Louis Weisberg  
 Saul Weisberg  
 Wayne and Marilyn Weissman  
 Klara G. Zahn  
 Laura and Phil Zalesky  
 Earl and Anita



Donald Power and Mary Brady  
Diane and Michael Prescott  
Mitch Press  
Karen and Richard Prince  
Margaret Ptacek  
Barbara Puryear  
The Putnam and Groudine Family Fund  
Cynthia Putnam and Mark Groudine

## Q-R ▶

Quest for Truth Foundation  
Guru Raj  
Steffany Raynes and Lin Skavdahl  
Timothy Reagan  
The Redistributing the Wealth Fund  
Ginger Reeves  
James Reid  
Rob and Donna Reimers  
Cornelia Remy and George Potter  
Renaissance Charitable Foundation Inc.  
Frank and Sherry Retherford  
John and Barbara Reynolds  
Fred and Gloria Rhoades  
Kristen and Tim Rich  
Janice Richardson  
Susan and Allan Richardson  
Sally and Skye Richendrfer  
Reliance Ricketts and Dick Wearn  
Byron Ricks and Maren Van Nostrand  
Sarah Welch and Jon Riedel  
Alexander Ripley  
Tim Sorenson and Nancy Rivenbaugh  
Gina Roberti  
Beverly Robertson Smith  
Lissa Robertson  
Chuck and Dee Robinson  
Mamie Rockafellar and John Hoofnagle  
Linda and Tom Roe  
Dennis Rogalsky  
Susan Rogers Berg  
Martha Rose  
Mike Rosekrans and Emma Ewert  
Rotary Club of Burlington  
Sara Roth Abe  
David Roth  
Helen and Tom Roth  
Michele Rowley  
Judith Rubin  
Donella Russell  
Jason Ruvelson  
Rebecca Ryan and Zach Roshner

## S ▶

Ray Sadler and Darcie Hull  
Salal Chapter Washington Native Plant  
Society  
Salesforce  
Mark and Leylan Salzer  
Elie and Lisa Samuel  
George Sanders and Karen Aronoff  
John and Margaret Sanders  
Nathan Rice and Anna Santo  
Sara Savage  
Jonathan Sayer and Abby Vincent  
Caitlin Scarano  
Barbara Schaetti  
Margot Schenet  
Lisa and Brad Scheuch  
Nancy Schilling  
Johanna Schneider  
Lydia and David Schoen

Gordon Shriver  
Alan Shurman and Amy Mower  
Lynn Sibley and Tom Brudenell  
The Sibyl Sanford Action Fund of the  
Whatcom Community Foundation  
Lawrence Sides  
Jennifer and Richard Siegel  
Katey Simetra  
Utkarsh Simha  
Joan and Charles Simmerman  
Richard and Irene Simpson  
Skagit Audubon Society  
Skagit Community Foundation  
Skagit Environmental Endowment  
Commission  
Skagit Valley Food Co-op  
Beth Skoczen and CJ Powell  
Julie Skylstad  
SmartWool, LLC  
Luke Smiraldo and Claudette Evans



Mary and John Schramm  
Mike and Wendy Schramm  
Peter and Leslie Schutt  
Randy Self  
Rita Selin  
Bobbie Seril  
James Seymour  
Haley Shapley  
The Sharing Foundation  
Beverly Shaw  
David Sheldon and Patricia Gomez  
Benjamin Shepherd  
Deejah and Ron Sherman-Peterson  
Richard Shilling and Barbara Henon  
Hye-In Shim

JB and Beth Smith  
Jim and Judy Smith  
Craig and Kathy Smith  
Mindy Smith  
Patrick Sokolski  
Mukul Soman  
Sheila Sondik and Paul Sarvasy  
Erin Soper  
Space Between  
Sue and Larry Spadoni  
Michael Srebnicki  
Rob and Liz St Andre  
Benjamin St. Germain  
Jan Stack-Leuze and Jeffrey Leuze  
Jack and Sandie Starr



Avril Steele  
 Margaret Steketeer  
 Kenneth Stevens  
 Amanda Stewart  
 Brandi Stewart  
 Craig and Val Stewart  
 Stillaguamish Tribe of Indians  
 Susan Stillman  
 Barbara Stolzenburg  
 Jeffrey and Daphne Stone  
 Francisca Strampher  
 Leslie Strickland  
 Janice and Walter Strigen  
 Hsung-Zin, Fen Fang Sung and Hseuh-Fang Cheng  
 James Sung and Nicole Lam  
 Johanna Surla and Liliana Arnold  
 Abby Sussman and August Allen  
 David and Barbara Sussman  
 Sarah Sutherland and Josh Torregrossa  
 Shara Svendsen  
 Swantz Family Foundation  
 Gordie and Peg Swartzman  
 Erika Sweger  
 Swinomish Indian Tribal Community  
 Peter and Marie Szydlowski  
 Christopher Szynal

**T ▶**

Jane Talbot and Kevin Williamson  
 Stowe and Nina Talbot  
 Linda Talley and Ron Norris  
 Margaret Tally  
 Debra Tan and Peter Duniho  
 Anne Tarver and Catherine Carine  
 Esther and Mark Teodoro  
 Karen, Steven, Dustin and Rita Thomas

Susan Thompson  
 Kevin Tighe and Rebecca Fletcher  
 Marla Timm  
 Garth Tissol  
 Julie and Bill Toomey  
 David Tran  
 Cecilia Nguyen and Man Tran  
 Julie Trout and Harvey Arnone  
 Mark Tschurr  
 Dr. Trileigh Tucker and Rob Duisberg  
 Brad and Jenny Tuininga  
 Stephanie and David Twigg

**U-V ▶**

Julie and Tony Urban  
 US Foods  
 Angela Vandenhaak and Brian Heinrich  
 Jon Vanderheyden and Kathleen Kilcoyne  
 Leanne and Reinder Vanderschoot  
 Karla VanderZanden  
 Rachel Vasak  
 Sarah and Paul Vautaux  
 Linda Versage and Walter Brodie  
 Lydia and Jose Vila  
 Deven Vilar  
 Kelly Vilar and Chris Sonnabend  
 Aaron Viles  
 Barbara Vogel and John Dickinson  
 Joan and Howard Voorheis  
 Cynthia and Vivian Voth

**W-Z ▶**

Jennifer Waldref  
 Andrew and Dee Walker  
 Maggie Walker  
 Martha Walker  
 Erin Wallin  
 Steve Wang and Kathryn Hamilton-Wang  
 John and Andrea Warner  
 Phoebe and Stephen Warren  
 Washington State Recreation and Conservation Office  
 Patricia Waterston  
 Holli Watne  
 Rebecca Watson and Darwin Nordin  
 Dr. Reitha and Mr. Russell Weeks  
 Eric Wehrly  
 Betsy Weigle

Maggie Weisberg  
 Bob Weisberg  
 Saul and Shelley Weisberg  
 Janet Welch  
 Wells Fargo Bank  
 Ms. Janet Wells  
 Barry Wenger and Mary Humphries  
 Laurie Werner  
 Mona West  
 Whatcom Community Foundation  
 Lee Whitford  
 Tim and Ann Whitney  
 Darrell and Joan Whittaker  
 Andy Wickstrand  
 Peter and Karen Wickstrand  
 Bill Wilcox  
 Terry Wiley  
 Doug Will  
 Kirsten Willer  
 Alma Williams  
 Brian Williams and Mary Raines  
 Paul and Sharon Willis  
 Jan Wilson  
 Bev Wiltshire  
 Carol Winge  
 Michael Winkelhorst  
 Cathy Wissink  
 Cyndi Wolfe  
 Susan Wong  
 Susan Wood and Jay Smith  
 Susan Woodside  
 Susan Woolf and Steve Price  
 Wren Ridge Fund  
 Robert and Barbara Wright  
 Gail Yampol  
 Celicia Yeoman  
 David and Peggy Yost  
 Kathy Young  
 Stacy Younglove  
 Polly Zehm  
 Chris and Helen Zimmerman  
 Laura Zimmerman

.....  
 Please let us know if you see any errors or omissions in this list: [give@ncascades.org](mailto:give@ncascades.org).

Thank you for your support!





# 2020 Audited Financial Statements

## STATEMENT OF FINANCIAL POSITION

### Assets

Cash and cash equivalents	\$524,164
Short-term investments	\$247,128
Receivables, net	\$39,744
Inventory and other	\$258,220
Long-term investments	\$6,466,961
Property and equipment, net	\$850,074
	<b>\$8,386,291</b>

### Liabilities

Accounts payable	\$160,200
Accrued expenses	\$107,350
Deferred revenue and other	\$41,674
Line of Credit (staff housing purchase)	\$285,615
	<b>\$594,839</b>

### Net Assets

Operating Reserve	\$2,000,000
Unrestricted & temporarily restricted funds	\$2,401,333

#### Designated Funds:

Conservation Education Fund	\$1,970,428
Nugent Family Fund	\$739,741
Youth Leadership Fund (Ginny Darvill)	\$218,600
Darby Foundation Scholarship Fund	\$97,360
N. C. Conservation Council Founders Fund	\$52,477
Andrew Goodwill Murphy Memorial Fund	\$50,404
John Miles Scholarship Fund	\$49,262
Weisberg Family Fund	\$59,462
Gary Peterson Memorial Fund	\$31,285
Jean Gorton Memorial Fund	\$24,088
Cook & Sullivan Fund	\$30,198
Brian Scheuch Memorial Fund	\$29,455
Campbell-Dalton Fund	\$37,359
	<b>\$7,791,452</b>

**Total Liabilities and Net Assets** **\$8,386,291**

## STATEMENT OF ACTIVITIES

### Support and Revenues

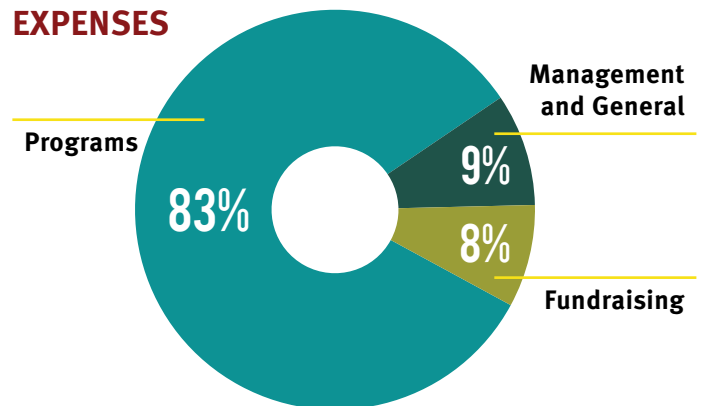
Contracts, tuition and fees, net	\$253,531
Investment income	\$702,039
Contributions	\$460,337
Government grants	\$706,382
In-kind contributions	\$121,082
Learning Center Fund - Seattle Foundation	\$295,000
Foundation grants	\$412,800
Rental Income	\$23,904
Bookstores (retail/outreach), net	\$112,422
	<b>\$3,087,497</b>

### Expenses

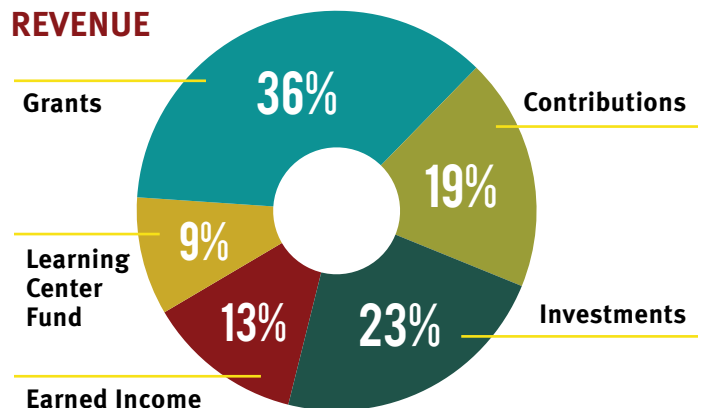
Programs	\$2,173,266
Management and general	\$239,192
Fundraising	\$218,282
	<b>\$2,630,740</b>

**Change in Net Assets** **\$456,757**

## EXPENSES



## REVENUE



North Cascades Institute has received **FOUR-STAR** ratings from *Charity Navigator* **15 YEARS IN A ROW.**